



# **UNIFORM STANDARDS**

**CANADIAN ASSOCIATION OF FIRE CHIEFS**

## SECTION 3

## UNIFORM STANDARDS

### TABLE OF CONTENTS

INTRODUCTION.....	Page 1
SPECIFICATION FOR TUNICS MALE FIREFIGHTERS & OFFICERS .....	Page 2
SPECIFICATION FOR TUNICS FEMALE FIREFIGHTERS & OFFICERS .....	Page 6
SPECIFICATION FOR UNIFORM CAP FIREFIGHTERS (MALE).....	Page 9
FIREFIGHTERS — UNIFORM CAP (FEMALE).....	Page 10
MALE OFFICERS — UNIFORM CAP .....	Page 10
FEMALE OFFICERS — UNIFORM CAP .....	Page 12
SPECIFICATION FOR SLACKS AND SKIRT FEMALE FIREFIGHTERS AND OFFICERS .....	Page 12
SPECIFICATION FOR TROUSERS MALE FIREFIGHTERS & OFFICERS .....	Page 15
SPECIFICATION FOR TOP COATS FIREFIGHTERS AND OFFICERS.....	Page 17
SPECIFICATION FOR PARKAS FIREFIGHTERS AND OFFICERS.....	Page 19
SPECIFICATION FOR TRENCHCOAT FIREFIGHTERS AND OFFICERS.....	Page 21
SPECIFICATION FOR FORMAL DRESS MESS KIT MALE OFFICERS AND FIREFIGHTERS.....	Page 23
FORMAL DRESS MESS KIT FEMALE OFFICERS AND FIREFIGHTERS .....	Page 25
SPECIFICATION FOR RANK AND SERVICE INSIGNIA.....	Page 26
DESIGN DRAWINGS — SLEEVE RANK INSIGNIA & SLIP ONS — UNIFORM CAPS.....	Page 27
DESIGN DRAWINGS — SLEEVE RANK INSIGNIA & SLIP ONS — UNIFORM CAPS.....	Page 28
DESIGN DRAWINGS — FIREFIGHTER TUNICS .....	Page 29
DESIGN DRAWINGS — FIREFIGHTER TROUSERS/SLACKS .....	Page 30
DESIGN DRAWINGS — MESS KIT .....	Page 31
DESIGN DRAWINGS — SKIRTS.....	Page 32

## SECTION 3

## UNIFORM STANDARDS

### INTRODUCTION

The Canadian Association of Fire Chiefs Uniform Standards Specification, introduced in 1971, became the working document for uniformity in appearance for the Canadian Fire Service. This standard was developed due to the wide variance in dress in the Fire Service which was detrimental to its public image. The Uniform Standards have played an important part in correcting this dress variance and have also resulted in savings in cost associated with standard designs. The uniform style and the unique design of the Maltese Cross with the Maple Leaf has been widely accepted as symbols of the Canadian Fire Service.

In 1985 a committee was given the responsibility of recommending changes to the standards where consensus opinion from a survey indicated the necessity for change. This document is the result of the work of that committee and has been in effect since 1988.

On close comparison of this document with the previous standard you could find that the styles remain basically unchanged, which reflects the durability of the original concept. Several options have been added in material weight which will allow regional and individual department preferences. Optional styles in firefighter tunics are also included.

New specifications have been developed for a distinctive and durable non-static winter parka coat and a shower-proof trench coat has also been included. Changes are evident in rank insignia sleeve braid trim, on fire chiefs uniform caps and a new cap designation for deputy chief.

The following specifications cover the materials and construction for specific fire service garments.

Each item must be individually tailored for the employee concerned to ensure proper fit and appearance. The supplier shall arrange suitable times for measurements. No departure from the standard design shall be made on the request of any individual employee.

Articles covered by this specification shall be manufactured according to recognized commercial practices and shall be free from defects in both materials and workmanship which may adversely affect serviceability and appearance.

All materials used shall conform to the requirements of this specification. Materials not defined within this specification shall be commercial quality and suitable for the purpose intended.

This specification includes many options. Whenever this document is used as the basis of a clothing tender the option requirements must be clarified for the bidder.

## SECTION 3

## UNIFORM STANDARDS

### Tapes and Bridle

Armholes, pockets and vent — 1/4" in width.

Edges 5/8" Silesia cut parallel to weft.

Bridles — shrunk cotton tape 5/8" wide.

### Sewings

Seams and Stitchings — size 50 three cord silk finish.

Boil fast or vat dyed.

Lapel and Collar Padding — 70 three cord, glazed finish.

Hand Felling — A or B skein silk.

Buttonholes and Bar Tacking — B and A spool silk.

Button Sewing — Cotton thread No. 12 four cord.

### Stitch Count

Seams and stitching .....	10 to 12 per inch
Buttonholes.....	26 stitches
Felling .....	8 per inch
Padding and Tacking .....	6 per inch
Zig Zag stitch .....	6 per inch

### Canvas Fronts

Shall be applied according to standard manufacturing procedure.

### Facings

Facings of shell material shall be cut in one piece and have a finished width or not less than 3 inches at the bottom end.

### Outlets

Shall be allowed on the basic pattern to permit the jacket to be made 1/2" wider at the sides and at the centre back seam.

Sleeve outlet shall be provided to widen the armhole if required.

### Basics of Design — (Single Breasted)

Four button single breasted semi fitted tunic with notch lapel. All buttons to be accommodated through eyelet holes. Top button to be in line with flap buttons. Bottom button to be in line with top of lower pocket flaps. Tunic to be half lined with a straight front having a one inch button stand, two body depression darts and a gorge dart.

### Basics of Design — (Double Breasted)

4 Button double breasted with 4 buttons to button.

Peak lapel.

## SECTION 3

## UNIFORM STANDARDS

Standard width braid to be C.A.F.C. 9/16" black braid with gold centre. Narrow width braid to be C.A.F.C. 9/32" black braid with gold centre. Braiding to be positioned in accordance with detail drawings for sleeve braid. Braid to encircle the sleeve with seam to inner side.

Braiding required:

Chief .....	5 straight rows of standard width gold braid.
Deputy Chief .....	4 straight rows of standard width gold braid.
Assistant Deputy Chief.....	3 straight rows of standard width gold braid.
Platoon Chief .....	2 straight rows of standard width gold braid with
.....	1 straight row of narrow width gold braid in centre.
Divisional Chief .....	2 straight rows of standard width gold braid with
.....	1 straight row of narrow width gold braid in centre.
District Chief.....	2 straight rows of standard width gold braid.
Captain.....	1 straight row of standard width gold braid.
Lieutenant.....	1 straight row of standard width silver braid.

### Buttons

Firefighters:

Nickel anodized C.A.F.C. standard buttons.

4 — 36 Ligne buttons on front inserted through eyelet holes.

1 — 24 Ligne button on each breast pocket inserted through eyelet holes.

No buttons on lower pockets or on the sleeves.

Officers:

Gold anodized C.A.F.C. standard buttons.

36 Ligne — 4 buttons on front inserted through eyelet holes.

24 Ligne — 1 on each breast pocket inserted through eyelet hole.

No buttons on lower pockets or on sleeves.

## SECTION 3

## UNIFORM STANDARDS

### Sewings

Seams and stitchings — size 50 three cord silk finish.

Boil fast or vat dyed.

Lapel and Collar Padding — 70 three cord, glazed finish.

Hand Felling — A or B skein silk.

Buttonholes and Bar Tacking — B and A spool silk.

Button Sewing — Cotton thread No. 12 four cord.

### Stitch Count

Seams and stitching.....10 to 12 per inch

Buttonholes.....26 stitches

Felling.....8 per inch

Padding and Tacking.....6 per inch

Zig Zag stitch.....6 per inch

### Canvas Fronts

Shall be applied according to standard manufacturing procedure.

### Facings

Facings of shell material shall be cut in one piece and have a finished width of not less than 3 inches at the bottom end.

### Outlets

Shall be allowed on the basic pattern to permit the jacket to be made 1/2" wider at the sides and at the centre back seam. Sleeve outlet shall be provided for widening if required.

### Edges

Single stitch 3/16" — fronts, collars, breast patches and pocket flaps.

### Seams

Outside — Plain seams.

Inside — Booked seams.

### Button Curtain

Button curtain for front buttons to be made from 2 pieces of body lining. It is to be 2" wide and to extend from top of button stand to 1 1/2" below bottom eyelet and to be positioned behind right front edge and stitched 1/16" and tacked at back corners.

### Pockets

2 — Breast box pleated patch pockets with 3 pointed flaps to button. Box pleat to be 1 1/2" wide.

## SECTION 3

## UNIFORM STANDARDS

### **Buttons — Firefighters**

Nickel anodized C.A.F.C. standard buttons.

4 — 36 Ligne buttons on front inserted through eyelet holes.

1 — 24 Ligne button on each breast pocket inserted through eyelet holes.

No buttons on lower pockets or on the sleeves.

### **SPECIFICATION FOR UNIFORM CAP FIREFIGHTERS (MALE)**

#### **Style**

Soft top — light weight — 10 1/4" to 10" top for size 7 1/8.

#### **Material**

Dark navy blue all wool serge or the combination wool and synthetic fibre materials (fortrel) laminated to not less than 1/8" urethane foam, 3/16" foam preferred.

#### **Peak/Visor**

Good quality small square with polished vinyl plastic top with hatters green lining, vinyl bindings, etc.

#### **Bottom Band**

2 1/4" fine weave stiff nylon mesh band, bound top and bottom with black fabricoid — bottom 3/8" of band to be finished with the shell material. A removable band of Maple Leaf braid shall cover the nylon mesh and can be removed in hot weather for ventilation.

#### **Chin Strap**

Black patent plastic single strap with loops.

#### **Sweat Band**

1" top quality leather reeded and machine sewn.

#### **Lining**

Red rayon with oil silk or plastic diamond.

#### **Buttons**

Silver anodized with strong wire shank and C.A.F.C. crested 24 ligne button.

#### **Thread**

4/40 dye-fast throughout.

## SECTION 3

## UNIFORM STANDARDS

### **Chin Strap**

Gold chin strap (non tarnish lace material).

### **Sweat Band**

1" top quality leather reeded and machine sewn.

### **Lining**

Red rayon with oil silk or plastic diamond.

### **Buttons**

Gilt anodized with strong wire shank and C.A.F.C. crested 24 ligne button.

### **Thread**

4/40 dye-fast throughout.

### **Eyelet**

Single eyelet to be fitted in good quality front stiffener — 1/4" above the nylon mesh band to permit removal of band without removing badge.

### **Grommet**

1/2" high impact styrene crown support grommet.

### **Rank Related Requirements**

#### **Peak/Visor — Fire Chief**

Quality moisture resistant peak, cloth covered and embroidered with 2 rows Maple Leaf pattern in Gold.

#### **Peak/Visor — Deputy Fire Chief**

Quality moisture resistant peak, cloth covered and embroidered with single row Maple Leaf pattern in Gold.

#### **Peak/Visor — Other Officers**

Good quality moisture resistant peak — cloth covered — no braid.

## **SECTION 3**

## **UNIFORM STANDARDS**

### **Slack Style**

No pleats.  
2 one-quarter top side pockets.  
No hip pockets, unless specifically requested.  
1 1/2" waistband with 1 1/2" extension.  
Button closure on extension.  
Button and button hole above zipper.  
Tunnel loops all around.  
Front zipper closure.  
Snugtex waistband.  
Plain bottoms.

### **Pocketing**

Unbleached drill pocketing 6.80 oz. per square yard.

### **Waistband and Closure Lining**

Plain or twill sateen.

### **Closure Interlining**

Cotton Silesia 4.2 oz.

### **Crotch Lining**

Plain or twill sateen.

### **Slide Fastener**

Metal zipper.

### **Buttons**

Black 22 Ligne

### **Buttonholes**

Shall be eyelet type, gimp reinforced bar or tail tacked and made with not less than 28 stitches per inch.

### **Bar Tacks**

Shall be 3/8" in length with not less than 15 cover stitches.

### **Button Sewings**

Machine not less than 16 stitches.  
Hand not less than 6 stitches.

## SECTION 3

## UNIFORM STANDARDS

### SPECIFICATION FOR TROUSERS MALE FIREFIGHTERS & OFFICERS

#### Material

All Season — Standard Weight

12 oz. dark navy blue serge of 65% wool and 35% fortrel.

62-64's wool quality — colour to be equal to Paton #2489-4.

Climatic conditions and departmental preferences may require alternatives in materials.

Two options for specific requirements are included in the following material weights:

(a) Winter Weight

14 oz. dark navy blue serge of 65% wool and 35% fortrel.

62-64's wool quality — colour to be equal to Paton #2489-4.

(b) Summer or Tropical Weight

10 oz. dark navy blue serge 55% wool and 45% fortrel.

62-64's wool quality — colour to be equal to Paton #2489-4.

#### Pocketing

Unbleached drill pocketing 6.80 oz. per square yard.

#### Waistband and Fly Lining

Plain or twill sateen.

#### Fly Interlining

Cotton Silesia 4.2 oz.

#### Crotch Lining

Plain or twill sateen.

#### Slide Fastener

Metal zipper.

#### Buttons

Black 22 Ligne.

#### Sewing

Chain seaming .....	30/4 cord cotton silk finish.
General sewing .....	40/3 cord soft.
Buttonholes .....	50/3 cord mercerized.
Bar Tacking .....	40/3 cord.
Buttons machine sewn .....	36/3 cord glazed.
Buttons hand sewn .....	35/4 cord glazed.

## **SECTION 3**

## **UNIFORM STANDARDS**

### **SPECIFICATION FOR TOP COATS FIREFIGHTERS AND OFFICERS**

#### **Material**

Navy blue fortrel and wool serge or navy blue gabardine. Cloth used to be laminated.

#### **Body and Sleeve Lining**

Matching satin.

#### **Sleeve Stiffener**

Cuff canvas — bias cut in 2 1/4" in width.

#### **Pocketing**

Black Windsor Twill pocketing or equal.

#### **Cutting**

All shell parts of each garment shall be cut from the same piece of material. Shell parts shall be cut in the direction of the warp.

#### **Sewing**

All seams and stitchings shall be lock stitched with 12 to 14 stitches per inch. Lapel padding, bridle felling and facing tacking shall be sewn with 6 to 8 stitches per inch. The ends of all seams and stitches shall be securely back stitched.

#### **Topcoat Design**

4 button single breasted fly front.  
1 buttonhole in lapel to convert.  
Balmacaan collar.  
Two piece split sleeve.  
Slash pockets with pass through slits.  
Shoulder straps.  
Centre vent.  
Knee length.  
Fully lined with detachable zip-in body lining.

#### **Edges**

Single stitched 5/16".

#### **Seams**

Back, underarm seams, top sleeve, shoulder seams — raised seam 5/16".  
Armhole seam and elbow seam — Plain.

## SECTION 3

## UNIFORM STANDARDS

### Pressing

Each garment shall be properly pressed in accordance with good commercial tailoring practice.

### SPECIFICATION FOR PARKAS FIREFIGHTERS AND OFFICERS

#### Material

Canadian Celanese — "Canadian Mist" 66% cotton and 35% nylon with water resistant finish and low surface static characteristics for safety. Colour to be #5216 Navy Blue to coordinate with uniform colour.

#### Style

Single breasted, fully lined, fly front with concealed 2 way jumbo zipper to start 5 1/2" from the bottom of coat.

Front to have flap to cover zipper with 3 snap fasteners.

#### Collar

Standard width self collar of shell material with throat tab.

#### Optional Collar

(a) Coordinated wide blue corduroy collar with shell material under collar — rounded collar points 5" wide at centre back, 5" long at collar point with throat tab.

(b) Wide "Borg" fur type collar with shell material under collar with throat tab.

#### Throat Tab

To provide maximum throat and face protection with Velcro or snap fasteners.

#### Shoulder Straps

To be of shell material with pointed end extending to collar seam. A buttonhole to accommodate a 30 Ligne button to be positioned 3/4" from pointed end. Strap width suitable for C.A.F.C. rank slip-ons.

#### Pockets

Two breast square pockets with centre pointed flaps with snap closures. Pockets to be at least 6" X 6". Flaps to be set 1" above pocket opening.

Two lower horizontal set in pockets with centre pointed flaps with snap closures. Pockets to be 7" wide by 8" deep. Flaps to be 2 3/4" deep at both ends and 3 3/4" deep at the centre. Distance between upper and lower pockets to be 4" on size 40R. Lower pocket bags to be serged and safety stitched. All stress points to be bar tacked.

## SECTION 3

## UNIFORM STANDARDS

### Snaps

Heavy duty metal.

3 down front — top 1" below collar seam.

Bottom snap 1" below top of lower pocket flap.

1 on each pocket flap.

### Trims

Quilting as above.

Front zipper regular 26" — talls 28".

YKK #AM0106 2 way jumbo aluminum.

Hood zipper YKK #A056 aluminum open end one way separable zipper.

Storm cuffs — match shades

Snap — heavy duty metal

Leather — vistram leather black

Pelon — for reinforcing of all snaps

Thread — corespun polyester — all stress points bartacked

Drawcord — 3/16" tubular black with plastic tip

### Cresting

Crested on each sleeve head 5/8" from armhole seam.

C.A.F.C. shoulder flashes.

## SPECIFICATION FOR TRENCHCOAT (SHOWER PROOF) FIREFIGHTERS AND OFFICERS

### Material

Canadian Celanese — "Canadian Mist" 65% cotton and 35% nylon with water resistant finish and low surface static characteristics for safety. Colour to be #5216 Navy Blue to coordinate with uniform colour.

### Style

Basic style 751.

3 button single breasted.

Fly front.

1 buttonhole in left lapel to convert.

Stand & Fall collar.

Fully lined.

### Edges

SS 5/16".

## **SECTION 3**

## **UNIFORM STANDARDS**

### **SPECIFICATION FOR FORMAL DRESS MESS KIT MALE OFFICERS AND FIREFIGHTERS**

#### **Material**

Jacket and Pant — Dark Navy or Black in all season or tropical weight. Specify colour and preferred weight.

#### **Jacket Style**

1 Button link (link to be 3" apart) waist length.

Rounded shawl collar faced with matching satin 4 piece patrol back with pointed bottom.

Fused front.

Fully lined.

#### **Edges**

Bluff.

#### **Seams**

Plain.

#### **Pockets**

None outside

2 inside breast pockets 4" wide x 5" deep.

#### **Back Design**

4 piece patrol back with pointed bottom.

#### **Collar**

Shawl collar faced with matching satin.

#### **Shoulder Straps**

None.

#### **Sleeves**

2 piece.

Braiding on sleeve according to rank (see braiding details).

#### **Cresting**

None.

#### **Buttons**

Gold C.A.F.C. 36 Ligne buttons — 2 required for link.

## **SECTION 3**

## **UNIFORM STANDARDS**

### **Footwear**

1/4 Wellingtons.

### **Decorations**

All medals to be miniatures worn on left side.

### **Gloves**

Optional — white only.

### **Braces**

White.

### **Cap**

No cap or hat to be worn with mess kit.

## **FORMAL DRESS MESS KIT FEMALE OFFICERS AND FIREFIGHTERS**

### **Skirt Style**

Two gore A line, full length.

Two front darts; four back darts.

Waistband 1 inch (2.5 cm.) wide.

Zipper — black nylon — left side.

Hook and bar waistband closure.

Lined to knee level with black princess twill.

Side seam vents — approximately 17.5 inches.

Hanger loops at side seams.

Hem 2" wide — serge bottom.

Officers — Black Maple Leaf Braid on sideseams from bottom of waistband down.

Firefighters — no braid on sideseams.

### **Recommended Accessories — Female**

#### **Cummerbund**

Matching or black satin.

#### **Blouse**

White, long sleeved, high buttoned collar with gold buttoned front closure.

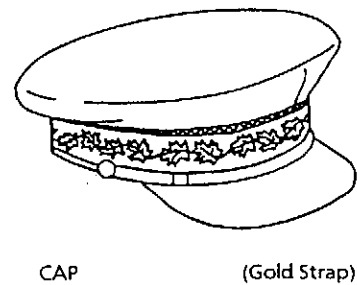
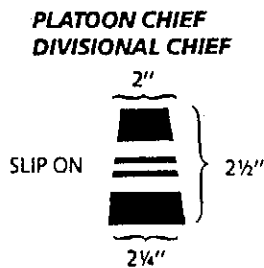
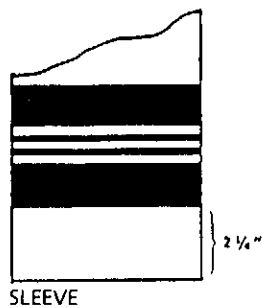
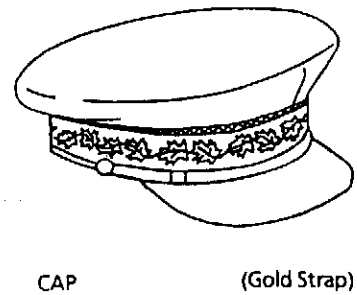
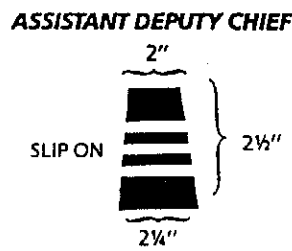
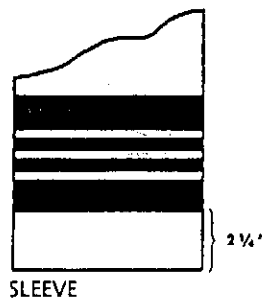
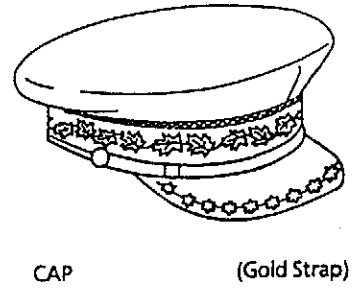
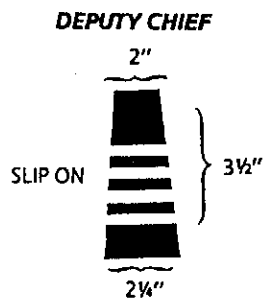
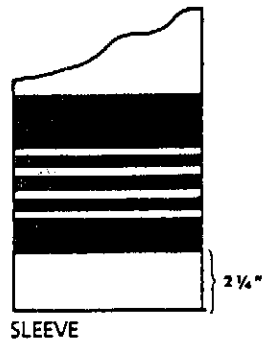
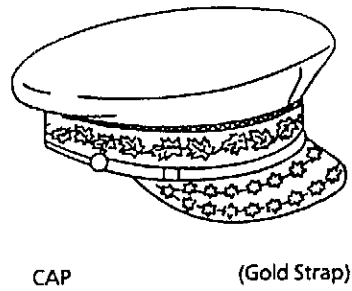
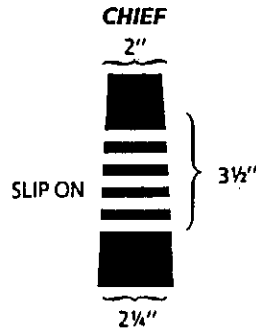
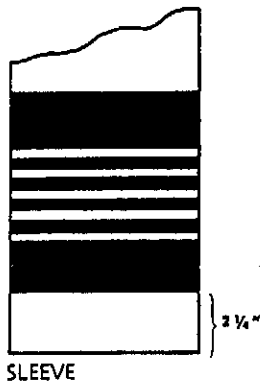
#### **Gloves**

White.

# SECTION 3

# UNIFORM STANDARDS

## DESIGN DRAWINGS -- SLEEVE RANK INSIGNIA & SLIP ONS -- UNIFORM CAPS

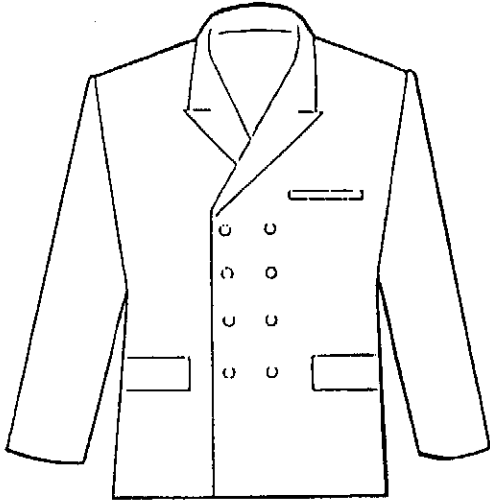


# SECTION 3

# UNIFORM STANDARDS

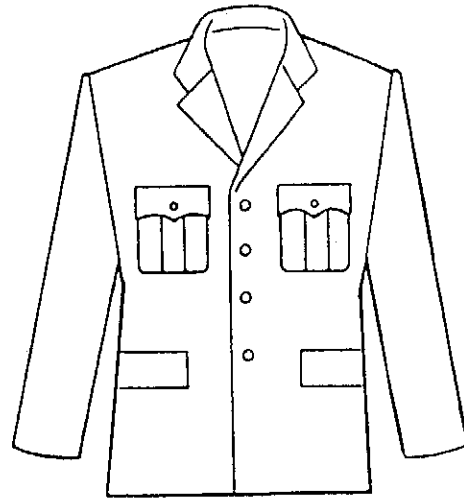
## DESIGN DRAWINGS -- FIREFIGHTER TUNICS

MALE FIREFIGHTER



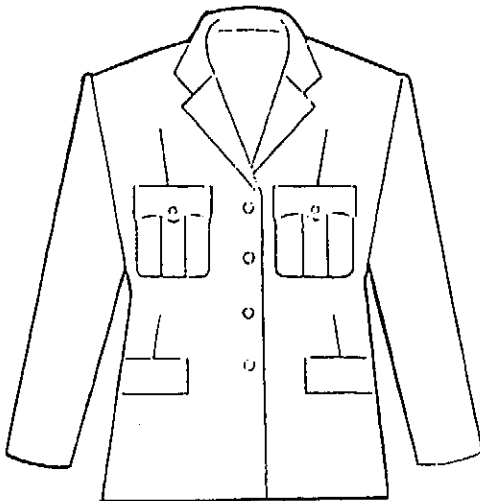
(Double Breasted)

MALE OFFICER or FIREFIGHTER

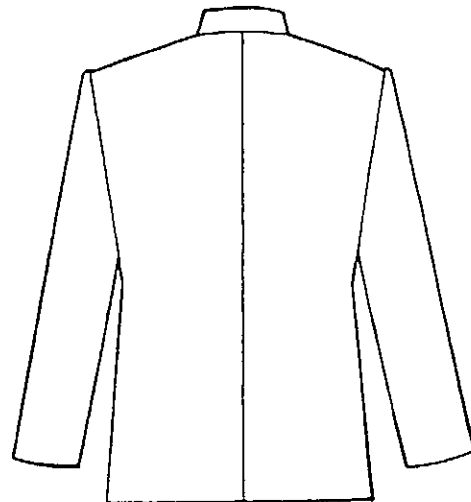


(Single Breasted)

FEMALE



(Single Breasted)



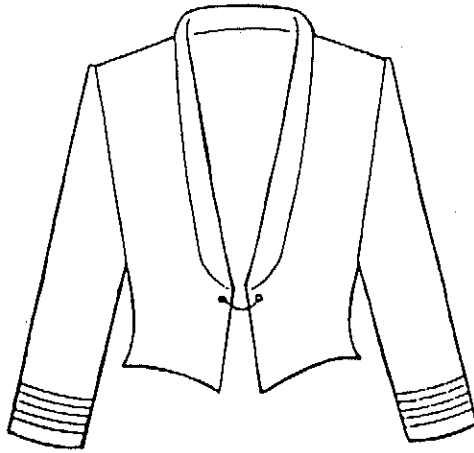
Back

# SECTION 3

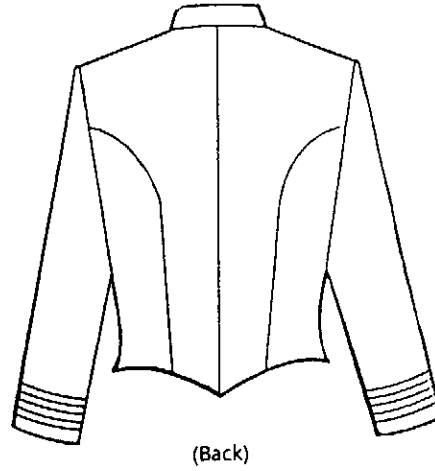
# UNIFORM STANDARDS

## DESIGN DRAWINGS -- MESS KIT

MESS JACKET



MESS JACKET



MESS KIT TROUSER

